



module 1
find out
about
you

lesson
106

find
your
perfect
blush
&
contour
shade

index

- 1 buying a new blusher or contour
- 1 choosing the right blush/contour colour
- 2 warm and cool colours
- 3 fair skin
- 4 medium skin
- 4 olive skin
- 5 women of colour
- 6 pro tips
- 7 contact

buying a new blusher or contour

Finding the right blush or contour colour for your skin tone is important because if you apply the wrong colour your whole look will be off, it will make you look like a clown or you can look totally washed out. The wrong colour can also make you look bruised or OMG! look older, the one thing we really don't want to happen !!

The best way to find your perfect blusher colour is to find one that matches the colour of your cheeks when you have a natural flush. An easy way to choose is to swatch some of the blusher on the palm of your hand and match it to the colour of your fingertips, the tips of your fingers are the closest match to your cheek colour.

It's also important that you do find a blush that works well with your lipstick colour otherwise it can look a bit too harsh.

When buying a new blusher or contour shade, if possible, go outside the store with it on (use a tester) and see what it looks like in natural daylight using a mirror or your phone. Lighting in the shops can be harsh fluorescents or crappy lighting that doesn't reflect back the true colour on your skin.

The rest of this lesson refers to blush colours and doesn't mention contour colours very much, this is to help you learn in an easier way.

The same rules for blusher selection apply to finding your right contour colour.

Know what your skin tone is and match to that.

For more help on contouring see the lesson 406 `Contouring With Blusher, Bronzer and Highlighter` module 4 - Applying Makeup Like A Pro.

choosing the right blush colour

If you like to use bronzers then knowing your skin tone will help when choosing the right bronzer or contour shade. Generally, bronzers should be warm, to look like a sun-kissed glow, while contours should be cool, to imitate a natural shadow.

Texture of the blusher is also something you should look at. Wearing a blusher that's sheer and blendable will look the most natural. Choose a satin or sheer blusher for the right texture - try testing it by wiping your finger over the surface, if it looks chalky or dry, it might not be satin or sheer.

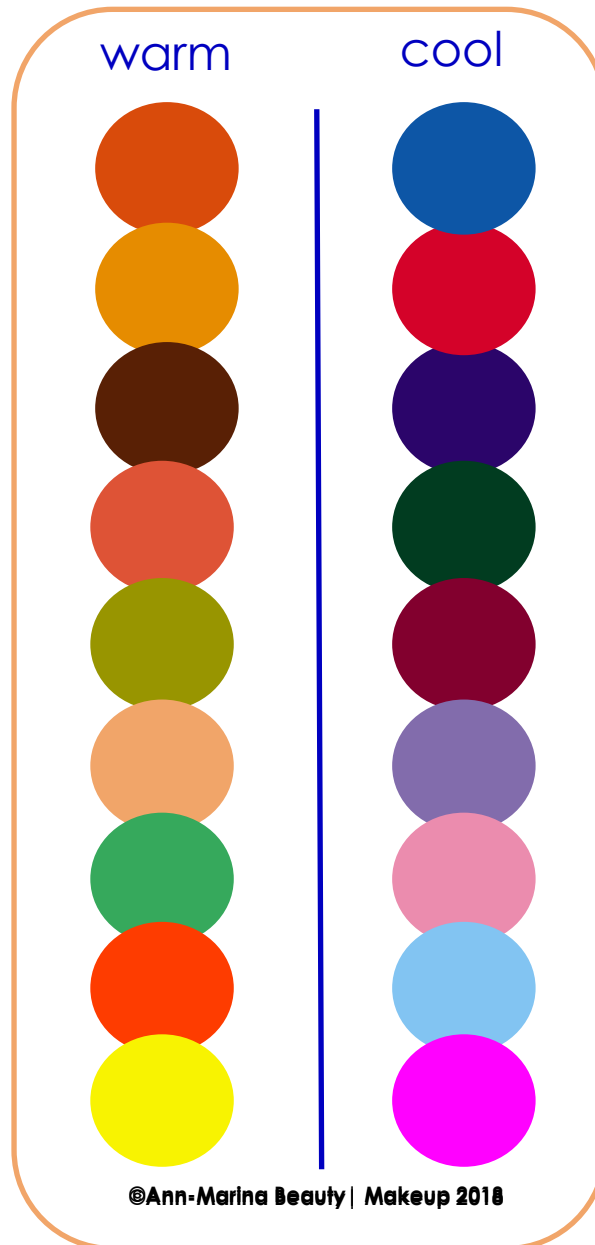
Like I mentioned above, choosing the right blush or contour shade for your skin tone is important in choosing what colours will look best on you, so it's best to stick to shades that also have the same undertone as your skin.

To find out what skin tone you are see lesson 102 `What Skin Tone Are You` module 1 Find Out About You.

Generally;

- ◇ If you're cool toned, try cool pinks
- ◇ Warm toned skin looks great with peach or coral shades.
- ◇ Neutral can go either way

warm and cool colours



See also lesson 301 `Your New #BFF - The Colour Wheel` Module 3 Tools For Makeup Mastery

warm and cool

Some colours such as pink or green, for example, can fall into both warm and cool categories. The chart above shows the difference between warm and cool colours side by side to help you see the difference.

A warm pink is a peachy pink. A cool pink would be a purplish pink. A warm green would be a yellowish green. A cool green would be more bluish.

Warm colours are based on yellows, oranges, browns, yellowish greens, warm reds.

Cool colours are based on blues, greens, pinks, purples, blue-greens, magentas, and true "blue-based" reds.

This simple chart above will help you to understand which colours are which, once you learn the basic differences between warm and cool colour tones.

Generally, a blush or contour with a brown or peach undertone is warm. A blush or contour with a purple or pink undertone is cool.

fair skin

fair with pink (cool) undertones

Look for pink, rose or rose-gold creamy blushers. If you're very pale with red undertones choose a cool pink colour.

For a dramatic evening look, choose a plum colour. Try a plum shade that is a translucent stain or a cream that's one or two shades darker than your lips with purple or blue hues.

You can also use it as a contouring shade in the hollows of your cheeks for a subtle shadow instead of a harsher, darker contouring line.

If you have pale skin with dark eyes and hair, try a peachy/pink colour that adds a bit of vibrancy.



Blushers with a soft shimmer as shimmery formulas are easier to sheer out on your fair skin as they're not too heavy.

If you have a natural blush that you want to highlight for a natural daytime look, try using a concealer pen around the nose and laugh line area so that the natural redness and flush you have is contained to the cheek area - it will look very flattering !

fair with yellow (warm) undertones

You can wear a coppery bronzer colour or try a peach or light coral to enhance your skin beautifully. On pale skin, peach is especially flattering if your complexion has yellow undertones as it enhances your natural flush,

Remember, use a light application as too much will create a harsh finish - avoid a funny clown look and select the right one for a natural, flushed cheek finish.

Stay away from bright colours like red or raspberry, these colours are too vibrant for a fair complexion as it brings out all the red tones in your skin.



medium skin

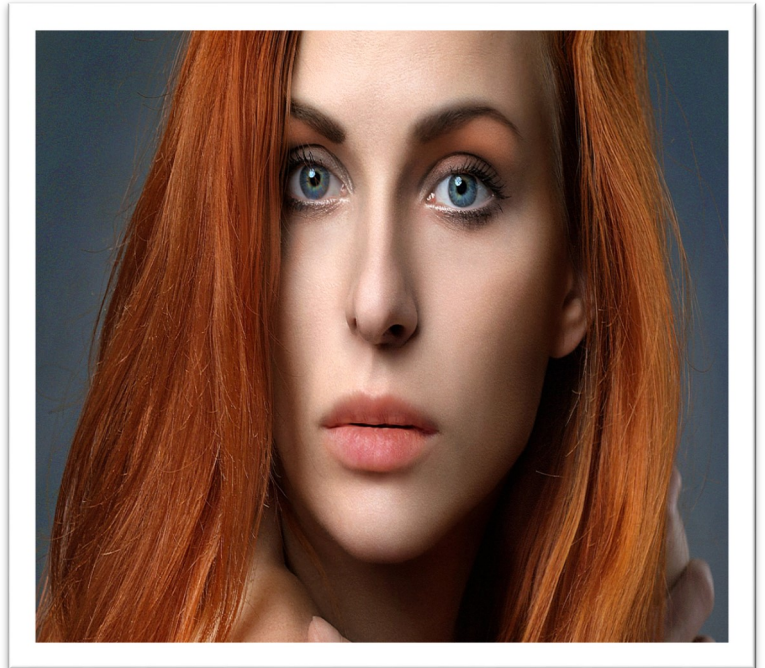
medium with yellow/gold (warm) undertones

Try shades like coral, apricot, dark peach and soft oranges for your with warm undertones.

A sheer dusty mauve will look natural as anything too bright can appear very unrealistic. Mauve can look fantastic and gives a rich depth - you can wear it with a mauve shadow and lipstick.

Another edgy look is a mixture of pink and apricot which is very flattering on your medium toned skin.

The goal is to highlight the golden undertones of your skin, not to try and change the hue of your face.



Apricot with a tinge of orange is flattering and subtle.

Stay away from blush colours that have a bluish undertone or you'll be left with what looks like slightly bruised cheeks and be careful with brown tones that might detract from your gorgeous glow.

Medium Skin Tone with cool undertones

For those with cooler undertones, try medium pink or pink/rose.

Stay away from blushes that are too pale e.g. baby pink as it can make your skin look a little dull.

Don't apply too heavily any darker hues like wine, plum and berry as they look too much if applied too heavily. If you like the darker tones, make sure you apply them lightly to look more natural.

olive skin

Finding a blush or contour for olive skin can be tricky because of its green undertones. Any warm toned blusher would suit as some cooler blushes can tend to look ruddy.

Try out warm, deep shades like oranges, apricots, peach, bronzes, reddish purples, plums and even reddish browns. If you want a shimmery blush or highlighter, stay with a golden shimmer rather than something silvery.

Rose is the ideal neutral colour for olive skin as its no too bright and not too dull. It helps to balance out olive tones especially if the undertone is a bit sallow looking.

Bronze looks amazing on olive skin tones - It adds warmth and brightens, and it can even be used to create soft contours if applied strategically. Used as a bronzer, contour or a bronze-tinged blush is going to really bring your olive skin to life.

women of colour

If you have darker skin, you can get away with more pigmented shades as they won't look as contrasted against your skin tone. While they may look scary in the compact darker hues or very bright colours, once applied, will give your skin the right amount of flush and look surprisingly neutral at times.

The darker your skin tone, the bolder you can go with your blush. Because you are working with a darker palette you have a wide choice with the blush and contouring colours and you don't have to be quite as worried about the colour being too harsh on your skin.

Darker complexions look better and last longer with a super-pigmented cream blush, then layer a powder blush on top to set and finish.

brown skin with yellow/golden (warm) undertones

You can choose from hot coral, pinky/peach or warm reds with rich brown undertones, and purple hues.



A red-brick colour has more red than a mauve/purple and looks more natural. Mauve/purple has more blue which makes it a cool colour and won't suit you, making you look ashen or muddy.

Brick is also a great for contouring under the cheekbones and in the temples etc.

You can easily wear an intensely pigmented orange and tangerine will just glow on golden-brown skin. Bright tangerine looks intense in the packaging, but on dark skin, it's the best way to get a natural blush that looks subtle and pretty.

dark skin with red (cool) undertones

A glimmering deep berry colour is the perfect way to bring life to ebony skin with red undertones. Try fuchsia, raisin, blue/pink rose to add vibrancy to your skin.



pro tips -

Cream vs powder

#1 If you're prone to breakouts, or have oily skin, use a powder formula. A cream blush is good for clear skin and darker complexions. Applying a powder over a cream blusher is good for a colourful cheek and will help it last longer.

#2 See also lesson 203 `Bronzers Blusher and Highlighters` module 2 Know Your Cosmetics And Save Money` This will help you find what product type is best for your skin type.

#3 If you're not sure how to blend blush, contour and bronzer together, or where on your face to apply it, see:

- > lesson 302 `Your Expert Guide To Brushes` module 3 Tools or Makeup Mastery
- > lesson 406 `Applying Blusher, Contour and Highlighter` module 4 Applying Makeup Like A Professional.



The picture on the left easily shows blusher and highlighter that hasn't been blended properly and look like stripe lines or war paint .

Blend Blend Blend with the right brushes to get a natural look that is flattering to you.

#notmywork I didn't apply the makeup in this shot and the picture is being used as an example and for informational purposes only.

contact

If you have any queries, please get in touch, I'm happy to answer all and any questions.



Direct Message Me:

www.annmarina.com/get-in-touch



Email:

ann@annmarina.com

follow me and join my tribe



www.facebook.com/annmarinamakeup



www.annmarina.com/my-blog



[msannmarina](#)



[@msAnnMarina](#)



[msAnnMarina](#)



[search: Ann Marina Beauty Makeup](#)



plus.google.com/+AnnMarinaMakeup



www.annmarina.com

The views expressed in this lesson and on the website are Ann-Marininas' own and are provided for informational purposes only. Nothing shall be construed as providing dermatological, medical or other such advice and you are always advised to seek the advice of a doctor, dermatologist or suitable professional should you have any such concerns.